



ASEAN'S FIRST & FASTEST GROWING SCIENTIFIC eCOMMUNITY

Issue: August 2019



RF3000™ Pipette Filler

Packed with features for comfortable and accurate pipetting. The powerful pump offers rapid, yet sensitive aspiration and dispensing, has adjustable valves and is microprocessor controlled for constant reliability and accuracy with one-year warranty.

NEW IN STORE

SAFETY STORAGE CABINET

- Ensure maximum protection for both personnel & products
- With NFPA & OSHA regulations



RM10
DISCOUNT

USE CODE **BSTORE10**
MIN SPEND RM500

RM20
DISCOUNT

USE CODE **BSTORE20**
MIN SPEND RM1,000

RM50
DISCOUNT

USE CODE **BSTORE50**
MIN SPEND RM2,000

1st - 31st AUGUST 2019

VALID FOR ALL PRODUCTS

*Terms & Conditions Apply

SOURCES & SUPPLIERS

Discover new sources & suppliers for scientific products & laboratory instruments in the lifesciences industry from ASEAN market

MEDIA PARTNER

Brands visibility & exposure through communication & social media to reach scientific communities across ASEAN

BUSINESS MATCHING

Connecting with business partners & distributors across ASEAN

EXPERIENCE

DeNovix **CellDrôp** &
Spectrophotometer

FOR YOURSELF

SCHEDULE YOUR

DEMO

Try it now!

COUNT CELL WITHOUT SLIDES



SmartReader™ 96 Microplate Absorbance Reader, for 96 Well Plates, 230V

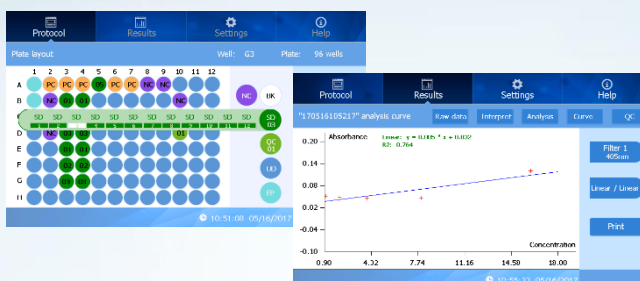
(SKU: MR9600-E)

The Accuris SmartReader 96 is a welcome addition to any lab that is routinely measuring concentration or absorbance in 96 well plates. The instrument's 7 inch touch screen, intuitive software and graphical interface makes it easy to use as a standalone instrument (a separate computer and additional software is not required).



Features:

- Filter based system with wavelength range from 340 to 750nm
- Absorbance range: 0.0 to 4.000 Abs
- Integrated, multi-speed plate shake
- 8 channel vertical optical path, with zero dispersion



PS 6100.R1.M Precision Balance, 6100g x 10 mg

(SKU: PS 6100.R1.M)



A standard level measurement for most laboratory and industrial processes, PS.R1 series balances represent a new standard of precision balances. They feature a new, readable LCD display which allows a clearer presentation of the weighing result.

Besides, the display has a new text information line allowing to show additional messages and data, e.g. product name or tare value.

- Ease of use and measurement accuracy
- Perfect readability and clear information layout
- Saved data can be analyzed, exported, imported or exchanged between weighing instruments

Silicone Lab Mat

(SKU: 120507)

Ideal for every type of laboratory and more specialized areas such as cold rooms, clean rooms, sterile suites and areas where high sterility is a requirement. The lab mats can be used with items such as centrifuges, vortex mixers, hot plates, stirrers, pipettes, and so much more.

- Autoclavable at 121° for 15 minutes
- Save money, eliminate the need for repeated purchases and disposal costs
- Made from a durable FDA food grade silicone
- Chemical resistance



Reusable, reliable, and reversible

Sprout® Plus Mini Centrifuge

The Sprout Plus is ideal for microfilter cell separations and HPLC samples, with adapters to accommodate all major microtube and PCR tube styles (1.5/2.0, 0.5, 0.2 mL) for customized use.

The Sprout Plus centrifuge housings are made from ABS plastic and lids are polycarbonate plastic enabling the unit to be easily cleaned.

- Brand: Heathrow Scientific
- The lid can be unlocked and opened with one hand
- A breaking function to quickly stop the unit when powered off or when the lid is opened
 - Maximum Speed: Approx. 6,000 rpm
 - 6 place 1.5/2.0mL tube rotor
 - 16 place 0.2mL tube rotor (single or 2x8 strip)
 - 6 tube adapters 0.2mL and 0.5mL



Accessory Kit Included



Magnetic stirrer

High-speed mini centrifuge

Magfuge® 2 in 1 Centrifuge and Magnetic Stirrer

(SKU: 120581)

The MagFuge ® is the industry's first high-speed centrifuge and magnetic stirrer, combined into one unit. Made from a durable chemically resistant ABS and polycarbonate making it easy to clean, maintenance free, and helps lower the cost of ownership.

- Easy to use digital display, one button programming
- Tool free rotor exchange
- Ultra-quiet operation

MC-24™ High Speed Microcentrifuge with COMBI-Rotor and snap on rotor cover, 230v

Benchmark's MC-24 Touch is the first microcentrifuge in its class to feature full colour touch screen control. Samples are kept cool, even during extended runs at the maximum speed setting by a proprietary air flow system that moves air evenly making this the perfect partner for any molecular biology laboratory.

- Combi-Rotor™, accept standard microtubes and PCR strips
- Quiet operation
- High-speed, up to 13,500 rpm/16,800 xg
- mySpin, 1 button program recall
- Unique air flow system, keeps sample cool



Snap-on rotor lid included



Thailand Lab International 2019

Thailand LAB INTERNATIONAL is organized by VNU Exhibitions Asia Pacific Co., Ltd. a joint venture between Jaarbeurs from the Netherlands and TCC Exhibition and Convention Center from Thailand.

VNU Exhibitions Asia Pacific develops, with industry partners and exhibition organizers from around the world, executes and internationalizes trade show and conferences from animal production and processing to technology, from agriculture to innovations and from pets to medical and laboratory sectors.

VNU Exhibitions Asia Pacific successfully applies its concepts and know-how across industries and in all Asian countries. Through its international network and global reach, VNU Exhibitions Asia Pacific builds marketplaces in Asia – for the world.

Date: 25 - 27 SEPTEMBER 2019

Venue: BITEC, Bangkok

Website: <http://www.thailandlab.com/>

Contact



Operation

Ms. Pattaraporn Jaihong

T: +662 670 0900 ext. 123

E: pattaraporn.jai@vnuexhibitionsap.com



Communication

Ms. Saengtip Techapatiphandee

T: +662 670 0900 ext. 122

E: saengtip.won@vnuexhibitionsap.com

The alternative trade exhibitions and conferences for laboratory technology, biotechnology, chemicals and safety in Southeast Asia, recording more than 9,109 attendances from 60 countries participating in the exhibition.

MORE UP COMING EVENTS:



Lab Asia 2019
Date: 15 - 17 October 2019
Venue: Putra World Trade Centre (PWTC), Kuala Lumpur
<https://www.lab-asia.com/>



Malaysia Medical Device Expo 2019
Date: 15 - 17 October 2019
Venue: Malaysia International Trade & Exhibition Centre (MITEC)
<http://www.mymedex.com.my/>